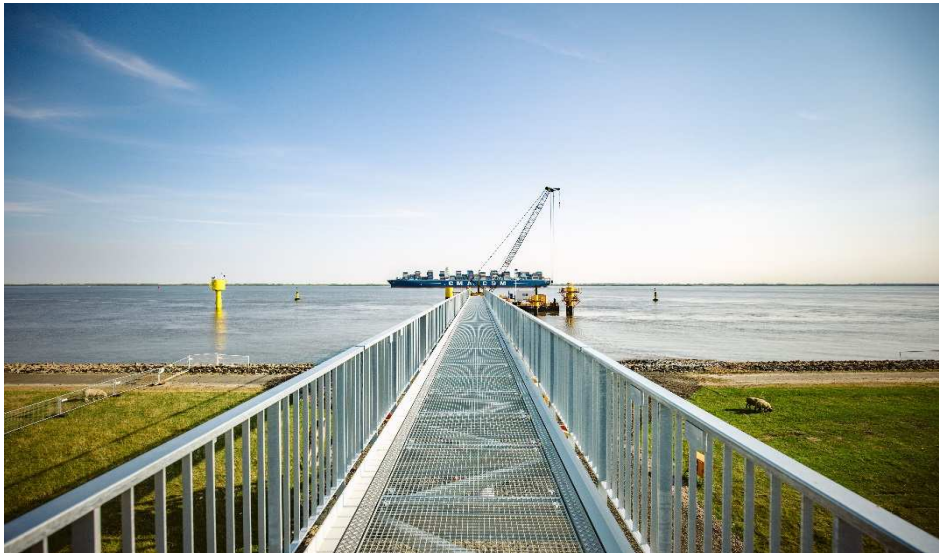


REFERENZ HARBOUR CONSTRUCTION AND MARINE ENGINEERING

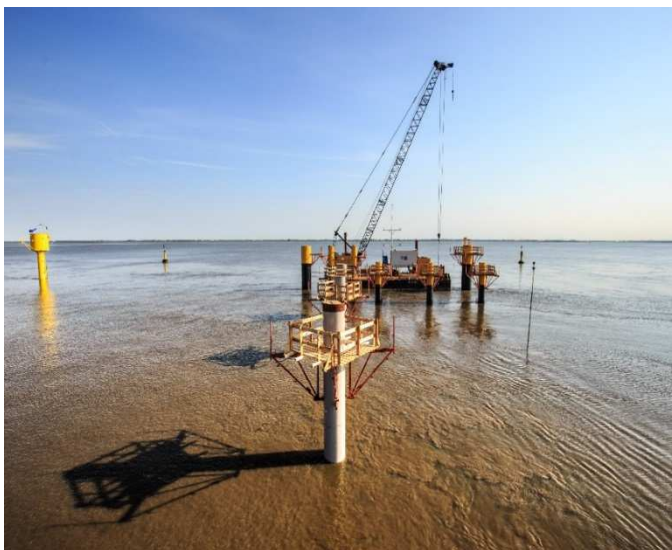
New construction pilot jetty – Brunsbüttel



F+Z Baugesellschaft was awarded the contract to build the new Brunsbüttel pilot jetty. An alternative offer was commissioned. This jetty is used by the pilots to transfer to the pilot vehicles ("Touch-and-Go" jetty).

The tender included the construction of an access walkway over the dike foreland, an access bridge and a mooring pontoon.

Considering the accessibility of the jetty even at high tide and flood levels, the jetty was planned with a height of +8.30mNN. Via this jetty the mooring pontoon of the Brunsbüttel pilot house can be reached flood-safe.



Contract Value:
~2,569 € Mio

Executed by:
F+Z Baugesellschaft
(ZNL der Hecker Bau GmbH & Co. KG)

Employer:
Wasser- und Schiffsamt Cuxhaven

Construction Period:
Apr. 2018 – Ende Oktober. 2018

Construction Site:
Elbe vor Brunsbüttel

Specifications / Main Quantities:
Tubes / support tubes / dolphins
268 t
Steel Structure approx.
76 t

